

Knitting and Tea and Cookies – Spring 2010 Mystery KAL – 1st Clue

Materials

Americo Linen Tanguis [50% tanguis cotton, 50% linen; 218 yd/199 m per 100g]; color I158; 1 skein (this solid colour is a grey/blue/green tone.)

If Substituting Yarn: choose a non-fluffy yarn (the better to show stitches crisply), in a colour flattering to you, in a worsted/10 ply/ 9wpi weight; 130 yards will be enough for all 4 clues.

1 set US #6/4mm straight needles (or size to obtain gauge)

1 tapestry needle

1 sewing needle

2-3 clear plastic buttons, 5/8" wide

Optional, for fourth clue only:

3-4 clear plastic buttons, small sizes

Gauge

20 sts/24 rows = 4" in stockinette stitch

Note: with the exception of the sl2tog, K1, pss0 decrease, slipped stitches should be slipped purlwise, with the yarn held to the wrong side of the work (which is to say, in front.)

Abbreviations

K: knit

K2tog: knit two together

LT: left twist (drop next st on left needle to front of work, K1, pick up dropped st and K)

P: purl

RT: right twist (skip next st on left needle, k 2nd st in front of skipped st, then K skipped st)

sl2tog, K1, pss0: slip two together, knit one, pass slipped sts over (slip two sts knitwise as though they were one, K1, pass slipped sts over knit st)

ssk: slip slip knit

st: stitch

yo: yarn over

Directions

Cast on 117 sts

Section One

Setup Row: [P1, K1] 14 times, [K1, P9] 6 times, K1, [P1, K1] 14 times

Row 1: Ssk, [K1, P1] 13 times, [P1, *K2tog, yo, K1; repeat from * twice more] 3 times, P1, [*K1, yo, ssk; repeat from * twice more, P1] 3 times, [K1, P1] to last 2 sts, K2tog – 115 sts

Row 2: [K1,P1] 13 times, K1, [K1, P9] 6 times, K1, [P1, K1] 13 times, P1

Row 3: Ssk, [P1, K1] 12 times, P1, [P1, * K1, yo, ssk; repeat from * twice more] 3 times, P1, [*K2tog, yo, K1; repeat from * twice more, P1] 3 times, [K1, P1] to last 3 sts, K1, K2tog – 113 sts

Row 4: [P1, K1] 13 times [K1, P9] 6 times, K1, [P1, K1] 13 times

Row 5: Cast off 26 sts, [*K2tog, yo, K1; repeat from * twice more, P1] 3 times, [*K1, yo, ssk; repeat from * twice more, P1] 3 times, [K1, P1] to last 2 sts, K2tog – 86 sts

Row 6: Cast off 25 sts, [P9, K1] 5 times, P9, sl1 – 61 sts

Section Two

(charted instructions are provided also, from this point onward)

Row 1: K3, K2tog, yo, K2, ssk, K10, LT, K6, RT, K2, RT, [K7, RT] twice, K1, K2tog, K2, yo, ssk, K3 – 59 sts

Row 2: S11, P9, sl1, [P8, sl1] twice, P3, sl1, P6, sl1, P to last st, sl1

Row 3: K2, K2tog, yo, K3, ssk, K4, LT, K2, RT, LT, K4, RT, K2, RT, K7, RT, K3, RT, K2, RT, K1, K2tog, K3, yo, ssk, K2 – 57 sts

Row 4: S11, P9, sl1, P3, sl1, P4, sl1, P8, sl1, P3, sl1, P4, sl1, [P2, sl1] twice, P to last st, sl1

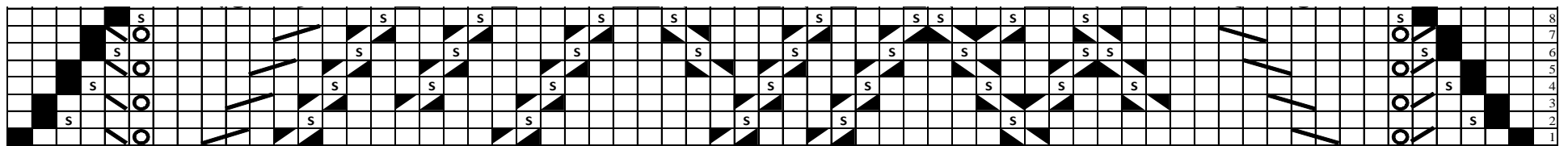
Row 5: K1, K2tog, yo, K4, ssk, K4, LT, RT, K2, LT, [K2, RT] twice, K1, LT, K4, RT, K3, RT, K2, RT, K1, K2tog, K4, yo, ssk, K1 – 55 sts

Row 6: S11, P9, sl1, P3, sl1, [P4, sl1] twice, [P3, sl1] twice, P2, sl1, P4, sl2, P to last st, sl1

Row 7: K2tog, yo, K5, ssk, K4, LT, K2, RT, LT, RT, K2, RT, K3, LT, K2, RT, K3, RT, K2, RT, K1, K2tog, K5, yo, ssk – 53 sts

Row 8: S11, P9, sl1, P3, sl1, P4, sl1, P2, sl1, P5, sl1, P3, sl2, [P2, sl1] twice, P to last st, sl1

| | |
|--|----------------|
| | No stitch |
| | Right twist |
| | Left twist |
| | Slip |
| | YO |
| | ssk |
| | K2tog |
| | ssk |
| | K2tog |
| | S12tog K1 pss0 |



for more information and knitting resources, visit www.marykeenanknits.com